

Z2 SERIES DC MOTOR

GUANGZHOU HAOQING MOTOR CO.,LTD

Characteristic and use:

Series Z2 DC machine is used for industry. It's suitable for electric power drag which timing range of constant power is not more than 1:2, over-loading capacity is not more than 1.5 rated torque. It also can be used for metal cutting machine tool, paper making, print, textile, cement-making, etc. Generator can be used for motive supply, illumination or other constant voltage supply. Booster generator is also suitable for charge and floating charge of large storage battery.



In order to adapt to adjusting voltage & speed in wide range when constant torque and accurate speed control, Z2 series has developed derive structure of strong wind and it's detector, which electrical specification is wholly the same with Z2. But when Z2 machine is equipped with ride style fan or double fan and speed indicating generator, it has compact structure and can run at a low speed for a long time, to make the use of wide range of adjustable-speed, accurate speed control. To meet the requirement of timing when constant torque, Z2 series electrical machine can be made to independent exciting generator with all kinds of exciting voltage to easily speed adjustment. According to different exciting power source, exciting voltage can be 110V, 220V, also can be other suitable voltage.

Furthermore, Z2 series can be adapted to other special demand, and in order to meet other special requirements. Z2 series derive some other specification:

1. ZT2 wide range of adjustable-speed motor: the range of adjust magnetism and speed when the motor is running at the constant power is 1:3 and 1:4. It is convenient for power supplying to constant voltage network which needs wide range of speed adjustment. To reduce the draught loss when running at a high speed, ZT2 which frame size is more than 7 commonly adapt strong ventaging.

2. ZT2 special voltage motor: motor which rated voltage is 180V, 340V and 440V are suitable for 1-phase and 3-phase controlled silicon electrical source supply, motor which rated voltage is 275V and 460V can be use for mine traction drive power source and other situation which need special voltage & power source.

3. ZO2 enclosed type motor: fully-enclosed, suitable for special, dustproof working environment.

4. According to special needs, Z2 series can also derive with compensate winding motor and generator. At this time, the overload times can be increased to about 2.5 times of rated torque, and the time of constant armature loop can be reduced, it's suitable for the situation which is large power servosystem or needs large overload torque. Presently,

No.8-11 frame have a part of specifications, if needed, can be developed.

Above mentioned four kinds of special specifications, the overall dimension, moment of inertia and weight are same as Z2.

Electrical machinery performance:

electromotor power range: 0.4Kw~200Kw

electromotor rated voltage: 110V and 220V

electromotor rated running speed): 3000r/min、1500r/min、1000r/min、750r/min and 600r/min

electrical machine power range: 0.6kW~185kW

electrical machine rated voltage: 115V and 230V

electrical machine rated running speed): 2850r/min and 1450r/min

On the following conditions, this series motor can be used continuously

- (1)Altitude above sea level maximal 1,000m.
- (2)Cooling air temperature maximal 40°C.

Excluded the above basic voltage、running speed and this catalogue, if you want other motor of special voltage and running speed, you can also contact us. For example, high humidity can order humid torrid zone. The basic excitation type of motor is shunt excitation with a little series stable winding. The voltoge-regulating aenerator is compounded excited excitation. (without series winding)

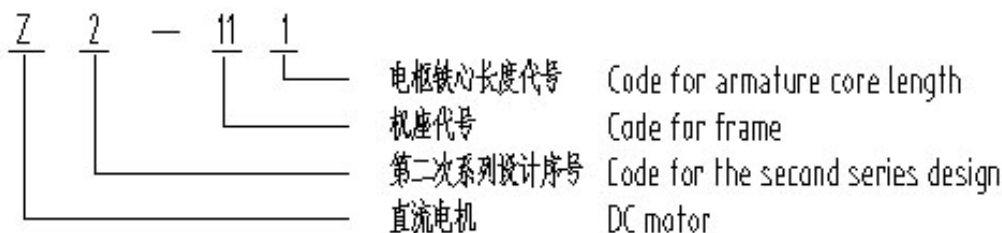
In order to meet different requirements, the series motor can be made to all kinds of independent excitation motor of different excitation voltage, also can be made to series and compound excitation motor with different series or compound percentage. Motor frame Z2-1~8 use class B insulation material, when the cooling air is not above +40°C, the temperature rise of winding is 80K (resistance method). Motor frame 9~11stator use insulation class B, the winding of rotor use class F, temperature rise of stator winding is 80K (resistance method) and temperature rise of rotor winding is 100K (resistance method).

If each stator winding of motor frame is monolayer naked conductor, then it' s temperature rise is 10K higher than it' s insulation class. The motor can use elasticity coupling, spur gear or triangle strap and other transmission method which have no axial thrust. If the motor is biaxial extension, motor frame 1-6' s biaxial extension both can pass rated moment; but the motor frame 7~11' s commutator shaft extension only can pass rated moment when without radial load. If it has radial load, it only can pass 50% of the rated torque.

The motor which power range is from 0.4kW to 2kW is allowed to adopt to first grade starting resistance to start.

For power is more than 2kW,starting machine with multistage starting resistance or using reducing armature voltage is adopted to step-up starting.

Model explanation:



Structure synopsis:

The basic products of Z2 series DC motor adopt drop-preventing, prevent drop, self fan cool, uniaxial structure. It is suitable for general normal working conditions, motor also can be made into biaxial.

The basic outlet wire faces to main driving-end (not commutator). Generator outlet wire is at left and the motor outlet wire is at right. Basic circumrotate is clockwise when facing to main driving-end. The structure installation of the motor please reference to table 1.

table 1

序号 serial number	代号 code No.	安装结构形式 installation structure	适用电机型号 applicable motor type
1	IMB3	卧式，机座带有底脚 horizontal, motor with leg	Z2-11~Z2-112
2	IMB34	卧式，机座带有底脚，端盖有小凸缘 horizontal, motor with leg, end shield with small flange	Z2-11~Z2-32
3	IMB35	卧式，机座带有底脚，端盖有大凸缘 horizontal, motor with leg, end shield with big flange	Z2-41~Z2-82
4	IMV14	立式，机座带有底脚，端盖有小凸缘 vertical, motor with leg, end shield with small flange	Z2-11~Z2-32
5	IMV15	立式，机座带有底脚，端盖有大凸缘 vertical, motor with leg, end shield with big flange	Z2-41~Z2-82
6	IMB14	卧式，机座带无底脚，端盖有小凸缘 horizontal, motor without leg, end shield with small flange	Z2-11~Z2-32
7	IMB5	卧式，机座带无底脚，端盖有大凸缘 horizontal, motor without leg, end shield with big flange	Z2-41~Z2-62
8	IMV18	立式，机座无底脚，端盖有小凸缘，轴伸向下 vertical, motor without leg, end shield with small flange, shaft extension downwards	Z2-11~Z2-32
9	IMV1	立式，机座无底脚，端盖有大凸缘，轴伸向下 vertical, motor without leg, end shield with big flange, shaft extension downwards	Z2-41~Z2-112
10	IMV19	立式，机座无底脚，端盖有小凸缘，轴伸向上 vertical, motor without leg, end shield with small flange, shaft extension upwards	Z2-11~Z2-32
11	IMV3	立式，机座无底脚，端盖有大凸缘，轴伸向上 vertical, motor without leg, end shield with big flange, shaft extension upwards	Z2-42~Z2-62

Z2 series motors' basic structure is self ventilation & drop-preventing, it can prevent drop、slag or other things from falling into the motor from uprightness 45°

1. Stator: composed of frame、magnetic pole and magnetic loop. The stator frame is made of steel or casting steel, it is outer spigot to enlarge the diameter of the fan in order to improve the ventilation. Motor frame 1~3 have two main poles and one interpole, motor frame 4~11 have 4 main poles and 4 interpoles.

2. End shield: made of cast iron. Its structure is considered of easy use and maintenance, improving the ventilation. It derived into sealed, out blow pipeline aeration etc.

3. Armature: composed of shaft, magnetic core, coil, fan, commutator etc. Shaft is made of high quality carbon structure. Fan can made of cast aluminium or armor plate according to its Diam. Motor frame 1~6' s commutator is made of plastic pressing, 7~11 made of traditional disport V style steel structure.

4.brand of bearing reference to table 2

table 2

机座号	卧式		立式	
	vertical		horizontal	
motor frame	传动端	换向器端	传动端	换向器端
	drive-end	commutator	drive-end	commutator
Z2-1	6302	6302	6302	6302
Z2-2	6304	6304	6304	6304
Z2-3	6305	6305	6305	6305
Z2-4	6307	6307	6307	6307
Z2-5	6309	6309	6309	6309
Z2-6	6309	6309	6309	6309
Z2-7	6310	6309	6310	7309ACJ
Z2-8	6311	6310	6311	7310ACJ
Z2-9	6314	6313	6314	7313ACJ
Z2-10	6317	6315	6317	7315ACJ
Z2-11	6320	6318	6320	7318ACJ

Content:

1.Before ordering,please reference to the booklet to make clear the type、specificationa and other data of the product you need. If the type and specifications are different to the, please contact us. If you have some special requirement, please make it clear and negotiate with the related department and sign the contract or trial-produce agreement after the acknowledgement.

2.The motor type, power,voltage, tuning speed,other data and structure type,excitation type,excitation voltage,accessory needed, equipped item and etc must write on the contract.

3.The stand-alone DC generator can conclude magnetic field rheostat; DC electrical machine unit can conclude magnetic field rheostat,pedestal, coupling and whole set matched AC motor.If needed,please write in the order contract.

4.The number of output shaft,position of outlet box and rolling direction must be write on the order contract, otherwise single outlet,facing the main drive clockwise, the motor is right outlet,electrical machine is standard left outlet.

5.If need matching 60Hz motor of exported products or need English instructions, please write details in the contract.

6.If the environment of using is special, must produce at the requirement of humid torrid zone, please write in the contract.

7.To improve the quality and technique, the product are reforming continuous the data、 dimension and matched motor are changing,please contact us when referencing.

8.If you have something unclear in the order instruction, please contact us.

Z2系列(110V, 3000r/min)的电动机
Z2 series (110V, 3000r/min) of motor

序号 serial number	电机型号 motor type	额定功率	额定电压	额定转速	额定电流	最高转速	惯量矩	重量
		kW rating power	V rating voltage	r/min rating running speed	A rating current	r/min Max. running speed	kg·m ² moment of inertia	kg weight
1	Z2-11	0.8	110	3000	10	3000	0.012	30
2	Z2-12	1.1	110	3000	13	3000	0.015	35
3	Z2-21	1.5	110	3000	17.5	3000	0.045	50
4	Z2-22	2.2	110	3000	24.7	3000	0.055	55
5	Z2-31	3	110	3000	33.2	3000	0.085	67
6	Z2-32	4	110	3000	43.3	3000	0.105	79
7	Z2-41	5.5	110	3000	62.3	3000	0.15	82
8	Z2-42	7.5	110	3000	83	3000	0.18	96
9	Z2-51	10	110	3000	107.5	3000	0.35	144

Z2系列(110V, 1500r/min)的电动机
Z2 series (110V, 1500r/min) of motor

序号 serial number	电机型号 motor type	额定功率	额定电压	额定转速	额定电流	最高转速	惯量矩	重量
		kW rating power	V rating voltage	r/min rating running speed	A rating current	r/min Max. running speed	kg·m ² moment of inertia	kg weight
10	Z2-11	0.4	110	1500	5.2	3000	0.012	30
11	Z2-12	0.6	110	1500	7.55	3000	0.015	35
12	Z2-21	0.8	110	1500	9.85	3000	0.045	50
13	Z2-22	1.1	110	1500	13	3000	0.055	55
14	Z2-31	1.5	110	1500	17.5	3000	0.085	67
15	Z2-32	2.2	110	1500	24.8	3000	0.105	79
16	Z2-41	3	110	1500	34.5	3000	0.15	82
17	Z2-42	4	110	1500	44.4	3000	0.18	96
18	Z2-51	5.5	110	1500	61	2400	0.35	144
19	Z2-52	7.5	110	1500	81.7	2400	0.4	156
20	Z2-61	10	110	1500	107.5	2400	0.56	180
21	Z2-62	13	110	1500	134.4	2400	0.65	200
22	Z2-71	17	110	1500	183	2250	1	265
23	Z2-72	22	110	1500	235	2250	1.2	300
24	Z2-81	30	110	1500	317	2250	2.8	403

Z2系列(110V, 1000r/min)的电动机
Z2 series (110V, 1000r/min) of motor

序号 serial number	电机型号 motor type	额定功率	额定电压	额定转速	额定电流	最高转速	惯量矩	重量
		kW rating power	V rating voltage	r/min rating running speed	A rating current	r/min Max. running speed	kg·m ² moment of inertia	kg weight
25	Z2-21	0.4	110	1000	5.31	2000	0.045	50
26	Z2-22	0.6	110	1000	7.4	2000	0.055	55
27	Z2-31	0.8	110	1000	10	2000	0.035	67
28	Z2-32	1.1	110	1000	13.35	2000	0.105	79
29	Z2-41	1.5	110	1000	18.3	2000	0.15	82
30	Z2-42	2.2	110	1000	26.4	2000	0.18	96
31	Z2-51	3	110	1000	34.3	2000	0.35	144
32	Z2-52	4	110	1000	45.2	2000	0.4	156
33	Z2-61	5.5	110	1000	61.3	2000	0.56	180
34	Z2-62	7.5	110	1000	82.2	2000	0.65	200
35	Z2-71	10	110	1000	111.6	2000	1	265
36	Z2-72	13	110	1000	142.5	2000	1.2	300
37	Z2-81	17	110	1000	188.4	2000	2.8	403
38	Z2-82	22	110	1000	238	2000	3.2	430
39	Z2-91	30	110	1000	322	2000	5.9	647
40	Z2-92	40	110	1000	425	2000	7	681

Z2系列(110V, 750r/min)的电动机
Z2 series (110V, 750r/min) of motor

序号 serial number	电机型号 motor type	额定功率	额定电压	额定转速	额定电流	最高转速	惯量矩	重量
		kW rating power	V rating voltage	r/min rating running speed	A rating current	r/min Max. running speed	kg·m ² moment of inertia	kg weight
41	Z2-31	0.6	110	750	7.91	1500	0.085	67
42	Z2-32	0.8	110	750	10.1	1500	0.108	79
43	Z2-41	1.1	110	750	14.4	1500	0.15	82
44	Z2-42	1.5	110	750	18.5	1500	0.18	96
45	Z2-51	2.2	110	750	26.5	1500	0.35	144
46	Z2-52	3	110	750	35.6	1500	0.4	156

47	Z2-61	4	110	750	47	1500	0.56	180
48	Z2-62	5.5	110	750	61.5	1500	0.65	200
49	Z2-71	7.5	110	750	86	1500	1	265
50	Z2-72	10	110	750	112	1500	1.2	300
51	Z2-81	13	110	750	148.5	1500	2.8	403
52	Z2-82	17	110	750	188.3	1500	3.2	430
53	Z2-91	22	110	750	242	1500	5.9	647
54	Z2-92	30	110	750	325	1500	7	681
55	Z2-101	40	110	750	427.5	1500	10.3	945

Z2系列(110V, 600r/min)的电动机
Z2 series (110V, 600r/min) of motor

序号 serial number	电机型号 motor type	额定功率	额定电压	额定转速	额定电流	最高转速	惯量矩	重量
		kW	V	r/min	A	r/min	kg·m ²	kg
		rating power	rating voltage	rating running speed	rating current	Max. running speed	moment of inertia	weight
56	Z2-91	17	110	600	192	1200	5.9	647
57	Z2-92	22	110	600	242.5	1200	7	681
58	Z2-101	30	110	600	327	1200	10.3	945
59	Z2-102	40	110	600	430	1200	12	1083

Z2系列(220V, 3000r/min)的电动机
Z2 series (220V, 3000r/min) of motor

序号 serial number	电机型号 motor type	额定功率	额定电压	额定转速	额定电流	最高转速	惯量矩	重量
		kW	V	r/min	A	r/min	kg·m ²	kg
		rating power	rating voltage	rating running speed	rating current	Max. running speed	moment of inertia	weight
60	Z2-11	0.8	220	3000	5	3000	0.012	30
61	Z2-12	1.1	220	3000	6.52	3000	0.015	35
62	Z2-21	1.5	220	3000	8.85	3000	0.045	50
63	Z2-22	2.2	220	3000	12.2	3000	0.055	55
64	Z2-31	3	220	3000	16.6	3000	0.085	67
65	Z2-32	4	220	3000	22.4	3000	0.105	79
66	Z2-41	5.5	220	3000	31	3000	0.15	82
67	Z2-42	7.5	220	3000	41.5	3000	0.18	96
68	Z2-51	10	220	3000	54.5	3000	0.35	144
69	Z2-52	13	220	3000	68.3	3000	0.4	156
70	Z2-61	17	220	3000	88.8	3000	0.56	180
71	Z2-62	22	220	3000	113.6	3000	0.65	200

Z2系列(220V, 1500r/min)的电动机
Z2 series (220V, 1500r/min) of motor

序号 serial number	电机型号 motor type	额定功率	额定电压	额定转速	额定电流	最高转速	惯量矩	重量
		kW	V	r/min	A	r/min	kg·m ²	kg
		rating power	rating voltage	rating running speed	rating current	Max. running speed	moment of inertia	weight
72	Z2-11	0.4	220	1500	2.64	3000	0.012	30
73	Z2-12	0.6	220	1500	3.77	3000	0.015	35
74	Z2-21	0.8	220	1500	4.92	3000	0.045	50
75	Z2-22	1.1	220	1500	6.5	3000	0.055	55
76	Z2-31	1.5	220	1500	8.74	3000	0.085	67
77	Z2-32	2.2	220	1500	12.5	3000	0.105	79
78	Z2-41	3	220	1500	17.2	3000	0.15	82
79	Z2-42	4	220	1500	22.7	3000	0.18	96
80	Z2-51	5.5	220	1500	30.9	2400	0.35	144
81	Z2-52	7.5	220	1500	41	2400	0.4	156
82	Z2-61	10	220	1500	53.5	2400	0.56	180
83	Z2-62	13	220	1500	68.6	2400	0.65	200
84	Z2-71	17	220	1500	91	2250	1	265
85	Z2-72	22	220	1500	116	2250	1.2	300
86	Z2-81	30	220	1500	157.5	2250	2.8	403
87	Z2-82	40	220	1500	207.5	2250	3.2	430
88	Z2-91	55	220	1500	287	2000	5.9	647
89	Z2-92	75	220	1500	383	2000	7	681
90	Z2-101	100	220	1500	511	1800	10.3	945
91	Z2-102	125	220	1500	630	1800	12	1083
92	Z2-111	160	220	1500	808	1500	20.4	1265
93	Z2-112	200	220	1500	1000	1500	23	1501

Z2系列(220V, 1000r/min)的电动机
Z2 series (220V, 1000r/min) of motor

序号 serial number	电机型号 motor type	额定功率	额定电压	额定转速	额定电流	最高转速	惯量矩	重量
		kW	V	r/min	A	r/min	kg·m ²	kg
		rating power	rating voltage	rating running speed	rating current	Max. running speed	moment of inertia	weight

94	Z2-21	0.4	220	1000	2.64	2000	0.045	50
95	Z2-22	0.6	220	1000	3.7	2000	0.055	55
96	Z2-31	0.8	220	1000	4.98	2000	0.085	67
97	Z2-32	1.1	220	1000	6.6	2000	0.105	79
98	Z2-41	1.5	220	1000	8.87	2000	0.15	82
99	Z2-42	2.2	220	1000	12.67	2000	0.18	96
100	Z2-51	3	220	1000	17.1	2000	0.35	144
101	Z2-52	4	220	1000	22.4	2000	0.4	156
102	Z2-61	5.5	220	1000	30.4	2000	0.56	180
103	Z2-62	7.5	220	1000	41.1	2000	0.65	200
104	Z2-71	10	220	1000	55	2000	1	265
105	Z2-72	13	220	1000	70.1	2000	1.2	300
106	Z2-81	17	220	1000	93.6	2000	2.8	403
107	Z2-82	22	220	1000	118.3	2000	3.2	430
108	Z2-91	30	220	1000	161	2000	5.9	647
109	Z2-92	40	220	1000	211.5	2000	7	881
110	Z2-101	55	220	1000	285.5	1500	10.3	945
111	Z2-102	75	220	1000	385	1500	12	1083
112	Z2-111	100	220	1000	510	1500	20.4	1265
113	Z2-112	125	220	1000	630	1500	23	1510

Z2系列(220V, 750r/min)的电动机
Z2 series (220V, 750r/min) of motor

序号 serial number	电机型号 motor type	额定功率 kW	额定电压 V	额定转速 r/min	额定电流 A	最高转速 r/min	惯量矩 kg·m ²	重量 kg
		rating power	rating voltage	rating running speed	rating current	Max. running speed	moment of inertia	weight
114	Z2-31	0.6	220	750	3.96	1500	0.085	67
115	Z2-32	0.8	220	750	5.1	1500	0.105	79
116	Z2-41	1.1	220	750	7.1	1500	0.15	82
117	Z2-42	1.5	220	750	9.2	1500	0.18	96
118	Z2-51	2.2	220	750	13.2	1500	0.35	144
119	Z2-52	3	220	750	17.7	1500	0.4	156
120	Z2-61	4	220	750	22.8	1500	0.56	180
121	Z2-62	5.5	220	750	30.5	1500	0.65	200
122	Z2-71	7.5	220	750	42.8	1500	1	265
123	Z2-72	10	220	750	55.4	1500	1.2	300
124	Z2-81	13	220	750	73.8	1500	2.8	403
125	Z2-82	17	220	750	93.6	1500	3.2	430
126	Z2-91	22	220	750	121	1500	5.9	647
127	Z2-92	30	220	750	161.5	1500	7	681
128	Z2-101	40	220	750	212.5	1500	10.3	945
129	Z2-102	55	220	750	285	1500	12	1086
130	Z2-111	75	220	750	387	1500	20.4	1265
131	Z2-112	100	220	750	514	1500	23	1510

Z2系列(220V, 600r/min)的电动机
Z2 series (220V, 600r/min) of motor

序号 serial number	电机型号 motor type	额定功率 kW	额定电压 V	额定转速 r/min	额定电流 A	最高转速 r/min	惯量矩 kg·m ²	重量 kg
		rating power	rating voltage	rating running speed	rating current	Max. running speed	moment of inertia	weight
132	Z2-91	17	220	600	95.5	1200	5.9	647
133	Z2-92	22	220	600	120.5	1200	7	681
134	Z2-101	30	220	600	162.5	1200	10.3	945
135	Z2-102	40	220	600	214	1200	12	1083
136	Z2-111	55	220	600	287	1200	20.4	1265
137	Z2-112	75	220	600	387	1200	23	1510

Z2系列(115V, 2850r/min)的发电机
Z2 series (115V, 2850r/min) of generator

序号 serial number	电机型号 motor type	额定功率 kW	额定电压 V	额定转速 r/min	额定电流 A	效率 %	惯量矩原动机型号	重量 kg
		rating power	rating voltage	rating running speed	rating current	efficiency	original motor type	weight
138	Z2-21	1.4	115	2850	12.2	78	Y90L-2	50
139	Z2-22	1.9	115	2850	16.6	79	Y100L-2	55
140	Z2-31	2.5	115	2850	21.8	81	Y112M-2	67
141	Z2-32	3.5	115	2850	30.5	81.5	Y132S1-2	79
142	Z2-41	4.8	115	2850	41.8	81.5	Y132S2-2	82
143	Z2-42	6.5	115	2850	56.5	83	Y160M1-2	96
144	Z2-51	9	115	2850	78.2	84.5	Y160M2-2	144
145	Z2-52	11.5	115	2850	100	85	Y160M2-2	156

Z2系列(115V,1450r/min)的发电机
Z2 series (115V,1450r/min) of generator

序号 serial number	电机型号 motor type	额定功率	额定电压	额定转速	额定电流	效率	惯量矩原动机型号 original motor type	重量
		kW rating power	V rating voltage	r/min rating running speed	A rating current	% efficiency		kg weight
146	Z2-21	0.7	115	1450	6.15	70	Y90S-4	50
147	Z2-22	1	115	1450	8.7	73	Y90L-4	55
148	Z2-31	1.4	115	1450	12.2	77	Y100L1-4	67
149	Z2-32	1.9	115	1450	16.5	79	Y100L2-4	79
150	Z2-41	2.5	115	1450	21.8	79	Y112M-4	82
151	Z2-42	3.5	115	1450	30.5	81	Y132S-4	96
152	Z2-51	4.8	115	1450	41.8	81	Y132M-4	144
153	Z2-52	6.5	115	1450	56.5	83.5	Y160M-4	156
154	Z2-61	9	115	1450	78.2	84	Y160M-4	180
155	Z2-62	11.5	115	1450	100	84.5	Y160L-4	200
156	Z2-71	15	115	1450	130.4	85	Y180M-4	265
157	Z2-72	19.5	115	1450	170	85.5	Y200L-4	300
158	Z2-81	26	115	1450	226	86	Y225S-4	403

Z2系列(230V,2850r/min)的发电机
Z2 series (230V,2850r/min) of generator

序号 serial number	电机型号 motor type	额定功率	额定电压	额定转速	额定电流	效率	惯量矩原动机型号 original motor type	重量
		kW rating power	V rating voltage	r/min rating running speed	A rating current	% efficiency		kg weight
159	Z2-21	1.4	230	2850	6.1	78	Y90L-2	50
160	Z2-22	1.9	230	2850	8.3	79	Y100L-2	55
161	Z2-31	2.5	230	2850	10.9	81	Y112M-2	67
162	Z2-32	3.5	230	2850	15.3	81.5	Y132S1-2	79
163	Z2-41	4.8	230	2850	20.9	81.5	Y132S2-2	82
164	Z2-42	6.5	230	2850	28.3	83	Y160M1-2	96
165	Z2-51	9	230	2850	39.1	84.5	Y160M2-2	144
166	Z2-52	11.5	230	2850	50	85	Y160M2-2	156
167	Z2-61	15	230	2850	65.2	86	Y160L-2	180
168	Z2-62	19.5	230	2850	84.8	86.5	Y200L1-2	200

Z2系列(230V,1450r/min)的发电机
Z2 series (230V,1450r/min) of generator

序号 serial number	电机型号 motor type	额定功率	额定电压	额定转速	额定电流	效率	惯量矩原动机型号 original motor type	重量
		kW rating power	V rating voltage	r/min rating running speed	A rating current	% efficiency		kg weight
169	Z2-21	0.7	230	1450	3.04	70	Y90S-4	50
170	Z2-22	1	230	1450	4.35	73	Y90L-4	55
171	Z2-31	1.4	230	1450	6.1	77	Y100L1-4	67
172	Z2-32	1.9	230	1450	8.3	79	Y100L2-4	79
173	Z2-41	2.5	230	1450	10.9	79	Y112M-4	82
174	Z2-42	3.5	230	1450	15.3	81	Y132S-4	96
175	Z2-51	4.8	230	1450	20.9	81	Y132M-4	144
176	Z2-52	6.5	230	1450	28.3	83.5	Y160M-4	156
177	Z2-61	9	230	1450	39.1	84	Y160M-4	180
178	Z2-62	11.5	230	1450	50	84.5	Y160L-4	200
179	Z2-71	15	230	1450	65.2	85	Y180M-4	265
180	Z2-72	19.5	230	1450	85	85.5	Y200L-4	300
181	Z2-81	26	230	1450	113	86	Y225S-4	403
182	Z2-82	35	230	1450	152.2	87	Y225M-4	430
183	Z2-91	48	230	1450	209	88	Y280S-4	647
184	Z2-92	65	230	1450	283	88.5	Y280M-4	681
185	Z2-101	90	230	1450	392	89	Y315S-4	945
186	Z2-102	115	230	1450	500	89	Y315M1-4	1083
187	Z2-111	145	230	1450	630	90	Y315M2-4	1265
188	Z2-112	185	230	1450	805	91	Y355M2-4	1510

Z2系列(110/160V,2850r/min)的调压发电机
Z2 series (110/160V,2850r/min) of voltage regulation generator

序号	电机型号	额定数据					电压		原动机型号	重量
		rating data					voltage			
		功率	电压	转速	电流	效率	110V	160V		

serial number	motor type	kw	V	r/min	A	%	功率	电流	功率	电流	prime	kg
		power	voltage	running speed	current	efficiency	kw	A	kw	A	motor type	weight
189	Z2-21	1.1	135	2850	8.15	76	0.9	8.15	1.1	6.88	Y90L-2	50
190	Z2-22	1.5	135	2850	11.2	79	1.23	11.2	1.5	9.38	Y90L-2	55
191	Z2-31	2.2	135	2850	16.3	79.5	1.8	16.3	2.2	13.8	Y100L-2	67
192	Z2-32	3	135	2850	22.2	81.5	2.44	22.2	3	18.8	Y112M-2	70
193	Z2-41	4	135	2850	29.6	78	3.26	29.6	4	25	Y132S1-2	82
194	Z2-42	5.5	135	2850	40.8	81	4.49	40.8	5.5	34.4	Y132S2-2	96
195	Z2-51	7.5	135	2850	55.6	82	6.12	55.6	7.5	46.9	Y160M1-2	144
196	Z2-52	10	135	2850	74.1	83	8.15	74.1	10	62.5	Y160M2-2	156
197	Z2-61	13	135	2850	96.3	84	10.6	96.3	13	81.3	Y160L-2	180

Z2系列(110/160V,1450r/min)的调压发电机
Z2 series (110/160V,1450r/min) of voltage regulation generator

序号	电机型号	额定数据					电压				原动机型号	重量
		rating data					voltage					
serial number	motor type	功率	电压	转速	电流	效率	110V		160V		prime	kg
		kw	V	r/min	A	%	功率	电流	功率	电流		
power	voltage	running speed	current	efficiency	kw	A	kw	A	kw	A	motor type	weight
198	Z2-21	0.6	135	1450	4.45	67	0.49	4.45	0.6	3.75	Y90S-4	50
199	Z2-22	0.8	135	1450	5.93	73	0.65	5.93	0.8	5	Y90S-4	55
200	Z2-31	1.1	135	1450	8.15	77	0.9	8.15	1.1	6.88	Y90L-4	67
201	Z2-32	1.5	135	1450	11.2	77	1.23	11.2	1.5	9.4	Y100L1-4	79
202	Z2-41	2.2	135	1450	16.3	75	1.8	16.3	2.2	13.8	Y100L2-4	82
203	Z2-42	3	135	1450	22.2	80	2.44	22.2	3	18.8	Y112M-4	96
204	Z2-51	4	135	1450	29.6	80	3.26	29.6	4	25	Y132S-4	144
205	Z2-52	5.5	135	1450	40.8	81	4.49	40.8	5.5	34.4	Y132M-4	156
206	Z2-61	7.5	135	1450	55.6	83	6.12	55.6	7.5	46.9	Y160M-4	180
207	Z2-62	10	135	1450	74.1	81	8.15	74.1	10	62.5	Y160L-4	200
208	Z2-71	13	135	1450	96.3	83	10.6	96.3	13	81.3	Y180M-4	265
209	Z2-72	17	135	1450	126	84	13.9	126	17	106.3	Y180M-4	300
210	Z2-81	22	135	1450	163	85	17.9	163	22	137.5	Y200L-4	403
211	Z2-82	30	135	1450	222	86	24.5	222	30	187.5	Y225S-4	430

Z2系列(220/320V,2850r/min)的调压发电机
Z2 series (220/320V,2850r/min) of voltage regulation generator

序号	电机型号	额定数据					电压				原动机型号	重量
		rating data					voltage					
serial number	motor type	功率	电压	转速	电流	效率	110V		160V		prime	kg
		kw	V	r/min	A	%	功率	电流	功率	电流		
power	voltage	running speed	current	efficiency	kw	A	kw	A	kw	A	motor type	weight
212	Z2-21	1.1	270	2850	4.08	76	0.9	4.08	1.1	3.44	Y90L-2	50
213	Z2-22	1.5	270	2850	5.6	70	1.23	5.6	1.5	4.69	Y90L-2	55
214	Z2-31	2.2	270	2850	8.15	79.5	1.8	8.15	2.2	6.88	Y100L-2	67
215	Z2-32	3	270	2850	11.2	81.5	2.44	11.2	3	9.38	Y112M-2	79
216	Z2-41	4	270	2850	14.8	78	3.26	14.8	4	12.5	Y132S1-2	82
217	Z2-42	5.5	270	2850	20.4	81	4.49	20.4	5.5	17.2	Y132S2-2	96
218	Z2-51	7.5	270	2850	27.8	82	6.12	27.8	7.5	23.4	Y160M1-2	144
219	Z2-52	10	270	2850	37	83	8.15	37	10	31.3	Y160M2-2	156
220	Z2-61	13	270	2850	48.2	84	10.6	48.2	13	40.7	Y160L-2	180
221	Z2-62	17	270	2850	63	86	13.9	63	17	53.2	Y180M-2	200

Z2系列(220/320V,1450r/min)的调压发电机
Z2 series (220/320V,1450r/min) of voltage regulation generator

序号	电机型号	额定数据					电压				原动机型号	重量
		rating data					voltage					
serial number	motor type	功率	电压	转速	电流	效率	110V		160V		prime	kg
		kw	V	r/min	A	%	功率	电流	功率	电流		
power	voltage	running speed	current	efficiency	kw	A	kw	A	kw	A	motor type	weight
222	Z2-21	0.6	270	1450	2.23	67	0.49	2.23	0.6	1.88	Y90S-4	50
223	Z2-22	0.8	270	1450	2.97	73	0.65	2.97	0.8	2.5	Y90S-4	55
224	Z2-31	1.1	270	1450	4.08	77	0.9	4.08	1.1	3.44	Y90L-4	67
225	Z2-32	1.5	270	1450	5.6	77	1.23	5.6	1.5	4.7	Y100L1-4	79
226	Z2-41	2.2	270	1450	8.15	75	1.8	8.15	2.2	6.88	Y100L2-4	82
227	Z2-42	3	270	1450	11.2	80	2.44	11.2	3	9.38	Y112M-4	96
228	Z2-51	4	270	1450	14.8	80	3.26	14.8	4	12.5	Y132S-4	144

229	Z2-52	5.5	270	1450	20.4	81	4.49	20.4	5.5	17.2	Y132M-4	156
230	Z2-61	7.5	270	1450	27.8	83	6.12	27.8	7.5	23.5	Y160M-4	180
231	Z2-62	10	270	1450	37.1	81	8.15	37.1	10	31.3	Y160L-4	200
232	Z2-71	13	270	1450	48.2	83	10.6	48.2	13	40.7	Y180M-4	265
233	Z2-72	17	270	1450	63	84	13.9	63	17	53.2	Y180M-4	300
234	Z2-81	22	270	1450	81.5	85	17.9	81.5	22	68.8	Y200L-4	403
235	Z2-82	30	270	1450	111.2	86	24.5	111.2	30	93.8	Y225S-4	430
236	Z2-91	40	270	1450	148	86	32.6	148	40	125	Y250M-4	647
237	Z2-92	55	270	1450	204	87	44.8	204	55	172	Y280S-4	681
238	Z2-101	75	270	1450	278	88.5	61.2	278	75	234	Y280M-4	945
239	Z2-102	100	270	1450	370	89	81.7	370	100	312.5	Y315M1-4	1083
240	Z2-111	125	270	1450	463	90	102	463	125	391	Y315M2-4	1265
241	Z2-112	160	270	1450	593	90.5	130.4	593	160	500	Y355M1-4	1510

额定电压440V直流电动机
rated voltage 440V DC motor

电机型号 motor type	额定功率 rating power kW	额定电压 rating voltage V	额定电流 rating current A	额定转速 rating running speed r/min	励磁方式 excitation type	励磁电压 excitation voltage V	备注 remarks
Z2-51	1.2	440	3.9	700/2100	并		
Z2-32	2.2	440	6	1500	他	220	
Z2-42	4	440	10.8	1800	他	220	
Z2-62	5.5	440	14.9	1350/2000	并		
Z2-52	7.5	440	20	1500	他	220	
Z2-42	7.5	440	20	3000	他	110/220	
Z2-62	11	440	28.5/30	1500/3000	他	220	
Z2-62	13	440	33.7	1500/2000	他	220	
Z2-91	17	440	47.5	600	并		
Z2-91	17	440	47	600	串		
Z2-71	17	440	45.1	1500	并		
Z2-82	22	440	59.5	1000	他	110或220	
Z2-72	22	440	57/59	1500/2000	他	220	
Z2-91	30	440	82.5	1000	他	220	
Z2-81	30	440	80	1500	他	220	
Z2-102	40	440	107/109	600/1200	他	110/220	
Z2-101	40	440	106/108	750/1500	他	220	
Z2-92	40	440	104.2	1000	他	220	
Z2-112	75	440	191/193	600/1200	他	220	
Z2-111	75	440	191	750	他	220	
Z2-93	75	440	191.5	1500	他	220	
Z2-113	100	440	225	750/1500	他	220	
Z2-111	100	440	285/261	1000/1800	他	220/440	
Z2-102	100	440	253	1500	他	220	
Z2-102	100/50	440/220	254/127	1500/750	复		强风
Z2-113	100/50	440	257/131	850/1700	他	180	强风
Z2-112	125	440	318	1000/1500	他	220	
Z2-111	160	440	410	1500	他复	220	
Z2-113	225	440	560	1500/1800	他	220	强风

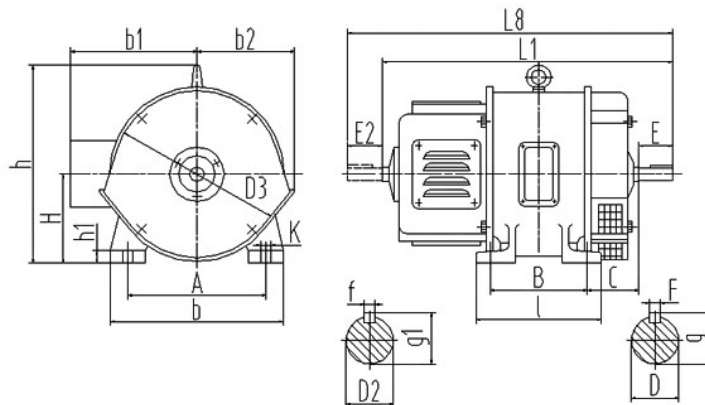
额定电压460V发电机
rated voltage 460V generator

电机型号 motor type	额定功率 rating power kW	额定电压 rating voltage V	额定电流 rating current A	额定转速 rating running speed r/min	励磁方式 excitation type	备注 remarks
Z2-62	11.5	460	25	1450	复	
Z2-62	11.5	460	25	1450	他230V	
Z2-62	11.5	460	25	1450	他220/40V	
Z2-81	19.5	460	42.4	1450	复	
Z2-81	19.5	460	42.4	1450	他220V	
Z2-82	26	460	56.5	1450	复	
Z2-81	26	460	56.5	1450	他220V	
Z2-91	48	460	104.5	1450	复	
Z2-91	48	460	104.5	1450	他110V	
Z2-91	48	460	104.5	1450	他220V	
Z2-92	65	460	141.5	1450	复	
Z2-92	65	460	141.5	1450	他220V	
Z2-101	65	460	141.5	1450	他110V	
Z2-101	65	460	141.5	1450	他30V	

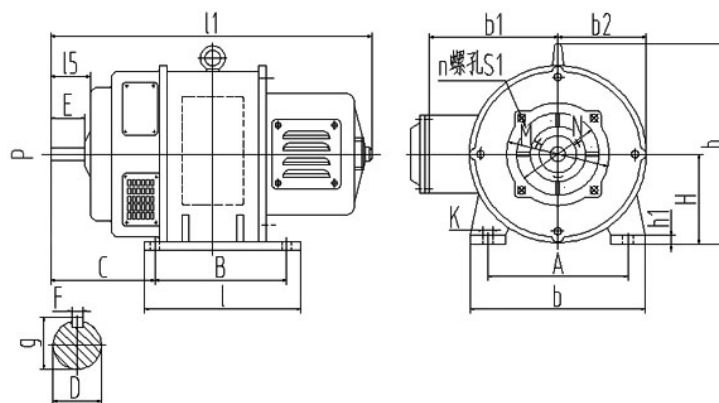
Z2-93	65	460	141.5	1450	复	
Z2-93	65	460	141.5	1450	他110V	
Z2-93	65	460	141.5	1450	他220V	
Z2-101	90	460	196	1450	复	
Z2-101	90	460	196	1450	他110V	
Z2-101	90	460	196	1450	他220V	
Z2-101	90	460	196	1450	他30V	
Z2-101	90	460	196	1450	他50V	
Z2-101	90	460	196	1450	他220V他	
Z2-102	115	460	250	1450	复	
Z2-102	115	460	250	1450	他220V	
Z2-111	125	460	272	1450	他220V	
Z2-111	145	460	316	1450	复	
Z2-111	145	460	316	1450	他220V	
Z2-111	145	460	316	1450	他110V	
Z2-112	185	460	402	1450	复	
Z2-112	185	460	402	1450	他220V	
Z2-112	185	460	402	1450	他复220V	
Z2-112	185	460	402	1450	他110V	

Z2T广调速直流电动机
Z2T wide range speed-adjusting DC motor

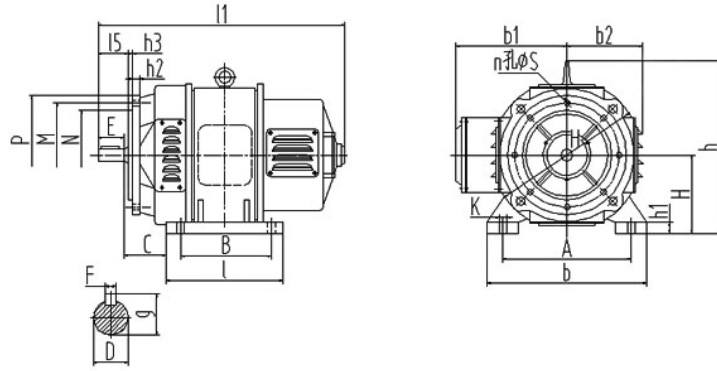
电机型号	额定功率	额定电压	额定电流	额定转速	励磁方式	备注
motor type	rating power	rating voltage	rating current	rating running speed	excitation type	remarks
	kW	V	A	r/min		
ZT2-72	2.5	220	16	300/1200	并	
ZT2-62	1.65	220	10.4	350/1400	并	
ZT2-81	4	220	25/27	400/1200	并	
ZT2-101	12	220	67/78	400/1200	他200V	强风
ZT2-113	40	220	210	400/1200	他200V	强风
ZT2-111	22	220	120.5/127	400/1600	并	强风
ZT02-52	0.32/0.96	110	4.8/12	450/1350	复	
ZT02-52	0.32/0.96	220	2.4/5.9	450/1350	复	
ZT2-91	7.5	220	46/48	500/1500	他200V	强风
ZT2-93	17	220	93	500/1500	他200V	强风
ZT2-112	55	220	298/300	500/1500	复	强风
ZT2-52	1.4	220	18/20	500/2000	并	
ZT2-52	1.4	110	9.0/9.7	500/2000	并	
ZT2-92	10	110	119/133	500/2000	并	强风
ZT2-92	10	220	55/66	500/2000	并	强风
ZT2-101	13	220	71.5/95	500/2000	并	强风
ZT2-102	22	220	121/140	500/2000	并	
ZT2-82	6.5	220	37/42	500/1650	他200V	强风
ZT2-92	17	220	93/96	600/1800	并	强风
ZT2-101	17	220	93/102	600/1800	他200V	强风
ZT2-71	22	220	120/135	600/1800	他110V/200V	强风
ZT2-72	4	220	23.6/29	600/2400	并	强风
ZT2-81	5.5	220	33/37	600/2400	并	强风
ZT2-82	7.5	110	88/104	600/2400	并	强风
ZT2-111	7.5	220	43.7/52	600/2400	并	强风
ZT2-42	55	220	283/305	700/2100	并	强风
ZT2-51	1.2	220	7.7/8.5	700/2100	并	
ZT2-51	1.2	440	3.9/4.4	700/2100	并	
ZT2-51	1.6	110	19.4/24.0	700/2100	并	
ZT2-52	1.6	220	10.1/12	700/2100	并	
ZT2-52	2.5	220	14.9/15.9	700/2100	并	
ZT2-52	2.5	110	29/33	700/2100	并	
ZT2-52	2	220	12.5/13.3	700/2800	并	
ZT2-82	13	220	72/77	750/2250	并	
ZT2-42	1.1	220	6.7/8.2	750/3000	复	强风
ZT2-52	2.2	220	13.4/15	750/3000	并	
ZT2-61	3	220	17.7/25	750/3000	并	
ZT2-22	0.3	110	4.4	800/2400	并	
ZT2-32	0.8	220	4.9/5.7	1000/3000	并	
ZT2-41	1.1	220	6.6/8.2	1000/3000	并	
ZT2-51	2.2	220	12.8/15	1000/3000	并	
ZT2-52	3	220	17.1/20	1000/3000	并	
ZT2-82	17	220	91/102	1000/3000	他200V	强风



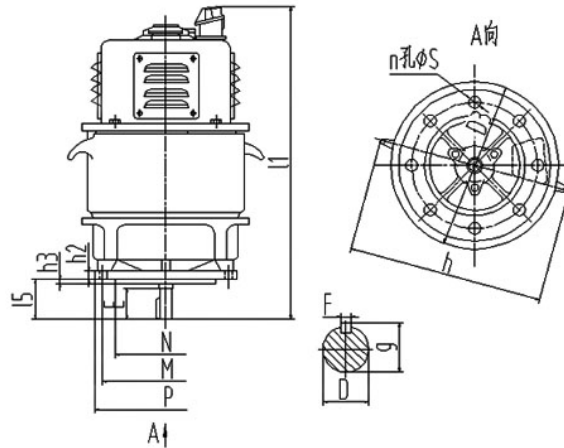
电机型号	外形尺寸																					
motor type	overall dimension																					
	A	B	C	D	D2	E	E2	F	f	g	g1	H	K	L8	h1	b	l	l1	h	b1	b2	D3
Z2-11	145	155	80	14	14	30	30	4	4	15.5	15.5	112	12	420.5	11	180	180	390	215	185	120	200
Z2-12	145	175	80	14	14	30	30	4	4	15.5	15.5	112	12	440.5	11	180	200	410	215	185	120	200
Z2-21	200	180	73	18	18	40	40	5	5	19.8	19.8	140	15	464.5	15	240	215	425	310	215	160	258
Z2-22	200	205	73	18	18	40	40	5	5	19.8	19.8	140	15	489.5	15	240	240	450	310	215	160	258
Z2-31	225	225	74	22	22	50	50	6	6	24.2	24.2	150	15	552	15	270	255	500	345	230	160	282
Z2-32	225	260	74	22	22	50	50	6	6	24.2	24.2	150	15	587	15	270	290	535	345	230	160	282
Z2-41	240	195	103	28	28	60	60	8	8	30.5	30.5	160	15	580	15	290	235	520	370	250	180	305
Z2-42	240	225	103	28	28	60	60	8	8	30.5	30.5	160	15	610	15	290	270	555	370	250	180	305
Z2-51	264	225	115	32	32	80	80	10	10	34.8	34.8	180	19	700	18	345	285	625	420	295	210	355
Z2-52	264	265	115	32	32	80	80	10	10	34.8	34.8	180	19	740	18	345	315	665	420	295	210	355
Z2-61	300	265	106	38	38	80	80	12	12	40.8	40.8	225	19	736	18	370	325	660	490	330	230	410
Z2-62	300	300	106	38	38	80	80	12	12	40.8	40.8	225	19	771	18	370	360	695	490	330	230	410
Z2-71	410	315	95	42	38	110	80	12	12	44.8	40.8	250	24	857	20	500	365	785	540	355	270	445
Z2-72	410	355	95	42	38	110	80	12	12	44.8	40.8	250	24	897	20	500	405	825	540	355	270	445
Z2-81	460	355	105	48	42	110	110	14	12	51.2	44.8	280	24	963	25	560	410	855	610	380	285	510
Z2-82	460	395	105	48	42	110	110	14	12	51.2	44.8	280	24	1000	25	560	450	895	610	380	285	510



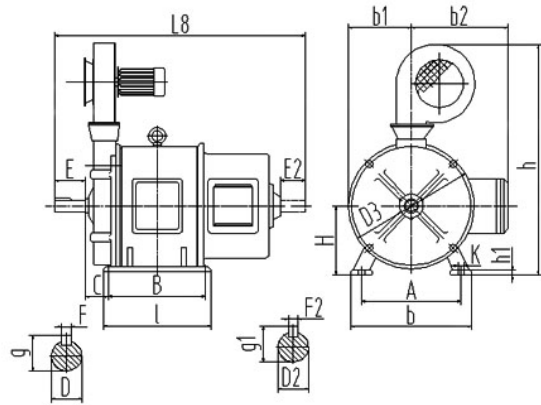
电机型号	外形尺寸																						
motor type	overall dimension																						
	A	B	C	D	E	F	g	H	h	h1	M	N	l	l1	b	b1	b2	S1	n	P	k	l5	D3
Z2-11	145	155	80	14	30	4	15.5	112	215	11	115	95	180	390	180	185	110	M8	4	135	12	29	201
Z2-12	145	175	80	14	30	4	15.5	112	215	11	115	95	200	410	180	185	110	M8	4	135	12	26.5	201
Z2-21	200	180	73	18	40	5	19.8	140	310	15	145	120	215	425	240	215	135	M10	4	169	15	39	253
Z2-22	200	205	73	18	40	5	19.8	140	310	15	145	120	240	450	240	215	135	M10	4	169	15	39	253
Z2-31	225	225	74	22	50	6	24.2	150	345	15	145	120	255	500	270	230	150	M10	4	169	15	55.5	282
Z2-32	225	260	74	22	50	6	24.2	150	345	15	145	120	290	535	270	230	150	M10	4	169	15	55.5	282



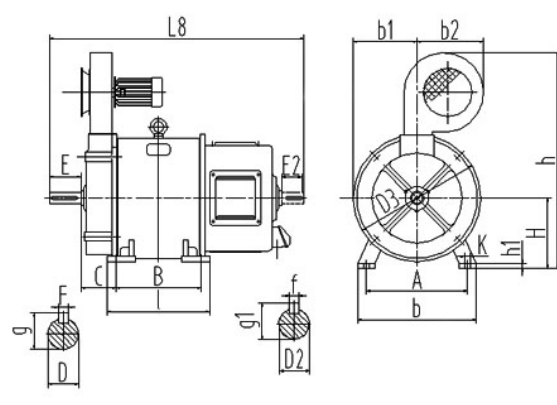
电机型号	外形尺寸																								
motor type	overall dimension																								
	A	B	C	D	E	F	g	H	K	S	n	N	M	l5	P	h1	h2	h3	b	l	II	h	b1	b2	D3
Z2-41	240	195	111	28	60	8	30.5	160	15	19	8	180	215	65	250	15	15	4	290	235	530	370	250	160	305
Z2-42	240	225	113.5	28	60	8	30.5	160	15	19	8	180	215	65	250	15	15	4	290	270	565	370	250	160	305
Z2-51	264	225	125	32	80	10	34.8	180	19	19	8	215	255	86.5	300	18	15	4	345	285	630	420	295	185	355
Z2-52	264	265	125	32	80	10	34.8	180	19	19	8	215	255	86.5	300	18	15	4	345	315	670	420	295	185	355
Z2-61	300	265	121	38	80	12	40.8	225	19	19	8	250	300	85.5	350	18	18	5	370	325	675	490	330	210	410
Z2-62	300	300	121	38	80	12	40.8	225	19	19	8	250	300	85.5	350	18	18	5	370	360	710	490	330	210	410
Z2-71	410	315	149	42	110	12	44.8	250	24	19	4	350	400	115	470	20	20	5	500	365	840	540	355	240	445
Z2-72	410	355	149	42	110	12	44.8	250	24	19	4	350	400	115	470	20	20	5	500	405	880	540	355	240	445
Z2-81	460	355	149.5	48	110	14	51.2	280	24	19	4	400	465	115	530	20	20	5	560	410	900	610	380	270	510
Z2-82	460	395	147	48	110	14	51.2	280	24	19	4	400	465	115	530	20	20	5	560	450	935	610	380	270	510



电机型号	外形尺寸														
motor type	overall dimension														
	D	E	F	g	S	n	N	M	l5	P	h2	h3	II	h	D3
Z2-91	65	140	18	68.9	24	8	610	660	146	720	25	6	1200	750	715
Z2-92	65	140	18	68.9	24	8	610	660	146	720	25	6	1235	750	715
Z2-101	75	140	20	79.2	24	4	560	610	146	720	25	6	1390	860	715
Z2-102	75	140	20	79.2	24	4	560	610	146	720	25	6	1440	860	715
Z2-111	90	170	24	95	24	4	610	670	183	805	30	8	1540	930	800
Z2-112	90	170	24	95	24	4	610	670	183	805	30	8	1590	930	800



电机型号	外形尺寸																				
motor type	overall dimension																				
	A	B	C	D	D2	E	E2	F	F2	g	g1	H	K	L8	h1	b	l	h	b1	b2	D3
Z2-41	240	195	103	28	28	60	60	8	8	30.5	30.5	160	15	580	15	290	235	680	160	250	305
Z2-42	240	225	103	28	28	60	60	8	8	30.5	30.5	160	15	610	15	290	270	680	160	250	305
Z2-51	264	225	115	32	32	80	80	10	10	34.8	34.8	180	19	700	18	345	285	720	185	295	355
Z2-52	264	265	115	32	32	80	80	10	10	34.8	34.8	180	19	740	18	345	315	720	185	295	355
Z2-61	300	265	106	38	38	80	80	12	12	40.8	40.8	225	19	736	18	370	325	800	210	330	410
Z2-62	300	300	106	38	38	80	80	12	12	40.8	40.8	225	19	771	18	370	360	800	210	330	410
Z2-71	410	315	95	42	38	110	80	12	12	44.8	40.8	250	24	857	20	500	365	970	230	355	444
Z2-72	410	355	95	42	38	110	80	12	12	44.8	40.8	250	24	897	20	500	405	970	230	355	444
Z2-81	460	355	105	48	42	110	110	14	12	51.2	44.8	280	24	963	20	560	410	1090	260	380	510
Z2-82	460	395	105	48	42	110	110	14	12	51.2	44.8	280	24	1000	20	560	450	1090	260	380	510



电机型号	外形尺寸																				
motor type	overall dimension																				
	A	B	C	D	D2	E	E2	F	f	g	g1	H	K	L8	h1	b	l	h	b1	b2	D3
Z2-91	550	400	149	65	60	140	140	18	18	68.9	63.9	315	24	1168	40	660	455	1126	305	320	610
Z2-92	550	455	149	65	60	140	140	18	18	68.9	63.9	315	24	1212	40	660	510	1130	305	320	610
Z2-93	550	475	168	65	60	140	140	18	18	68.9	63.9	315	24	1273	40	660	555	1130	305	320	610
Z2-101	600	460	171	75	70	140	140	20	20	79.2	74.2	355	28	1311	40	730	520	1250	335	465	670
Z2-102	600	510	171	75	70	140	140	20	20	79.2	74.2	355	28	1361	40	730	570	1250	335	465	670
Z2-111	650	535	164	90	85	170	170	24	24	95	90	400	35	1482	45	800	600	1315	375	465	740
Z2-112	650	585	164	90	85	170	170	24	24	95	90	400	35	1532	45	800	650	1315	375	465	741
Z2-113	650	650	164	90	85	170	170	24	24	95	90	400	35	1598	45	800	715	1315	375	465	741

GUANGZHOU HAOQING MOTOR CO.,LTD

E-mail: sherry@gzhqmotor.com

Website: <http://www.gzhqmotor.com>